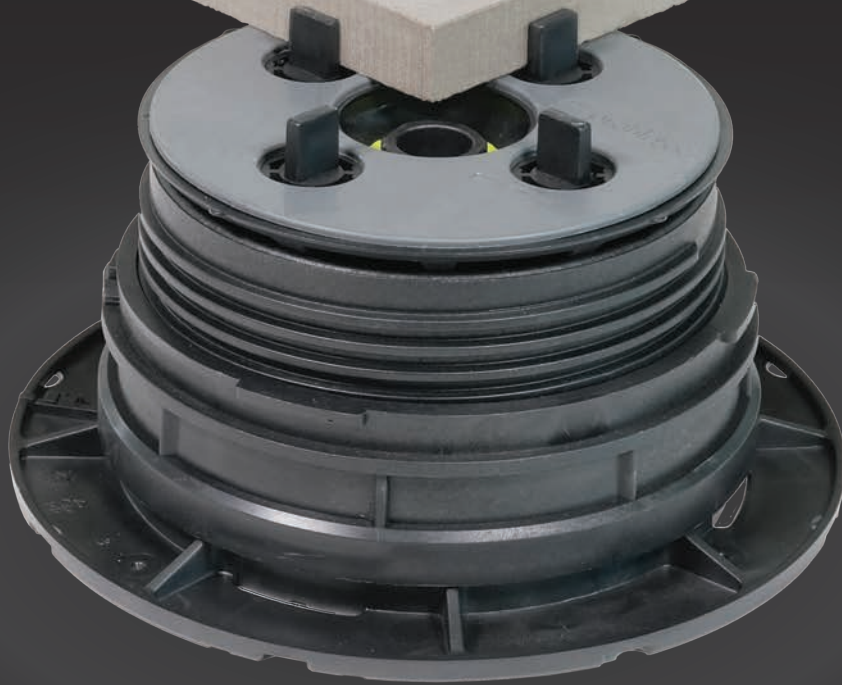


US

up+tec®



**Pedestal system**  
for raised floors

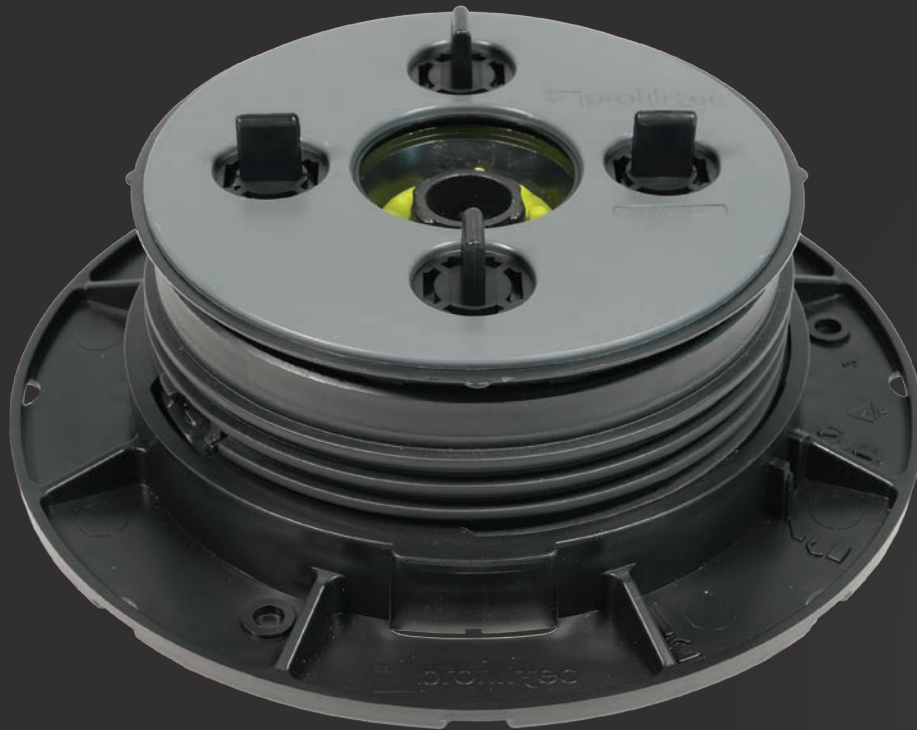
 **profiltec**  
positive profile



# up+tec®

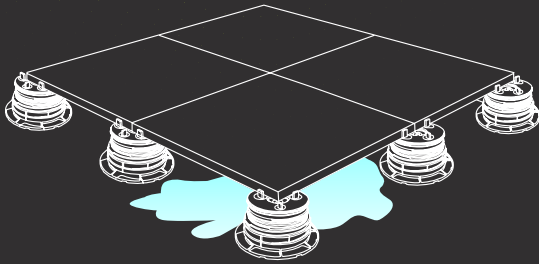
Pedestals for raised floors with integrated system that allows the transition from self-levelling to fixed head positioning.

 Patented system

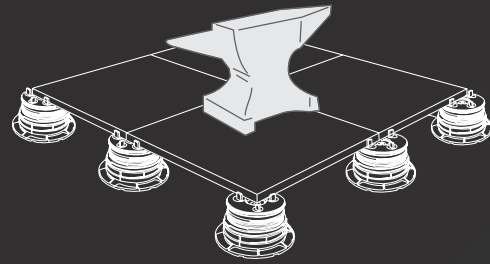


# RAISED FLOORS

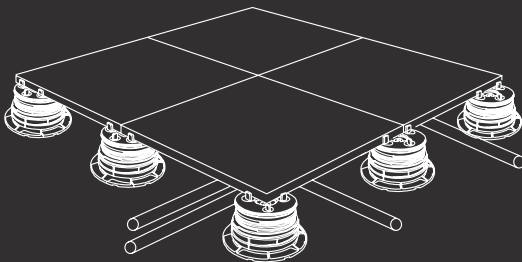
The installation of raised floors offers benefits that go beyond simple aesthetics. Piping, wiring and drains are located below the finished floor where all water management and other mechanical functions occur which allows for a uniform floor. Further, tile can be easily removed to allow access to these elements while providing high load capabilities. Profilitec's uptec system is the best solution for outdoor raised floors such as terraces, gardens, pool sides, verandas and public places.



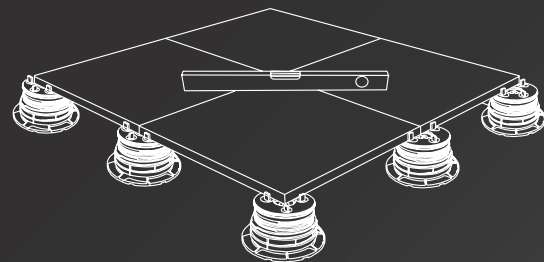
Efficient water management



High load resistance



All mechanical elements hidden



Completely level floor

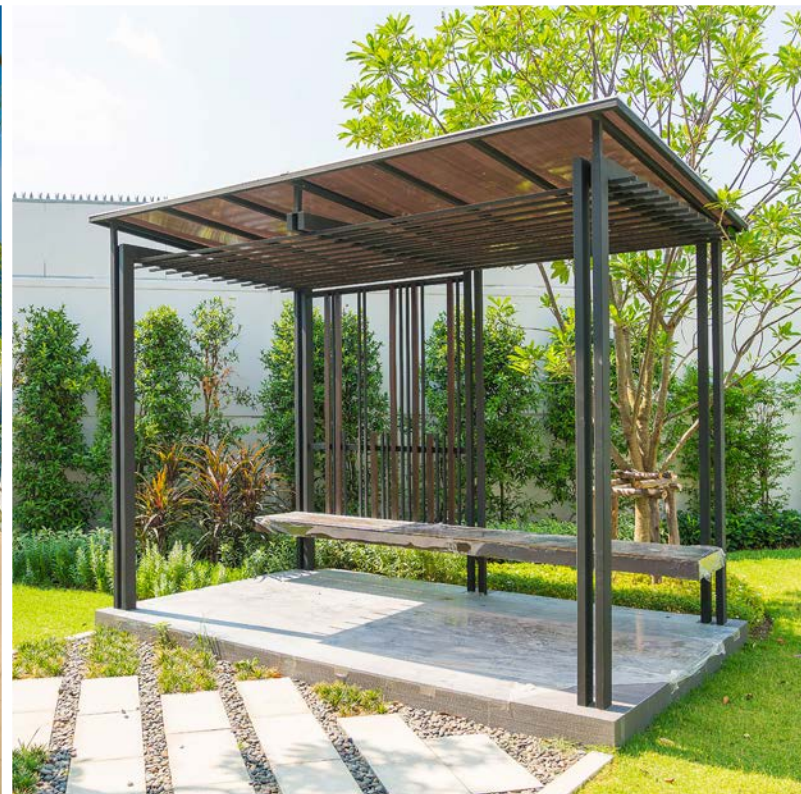




# Applications

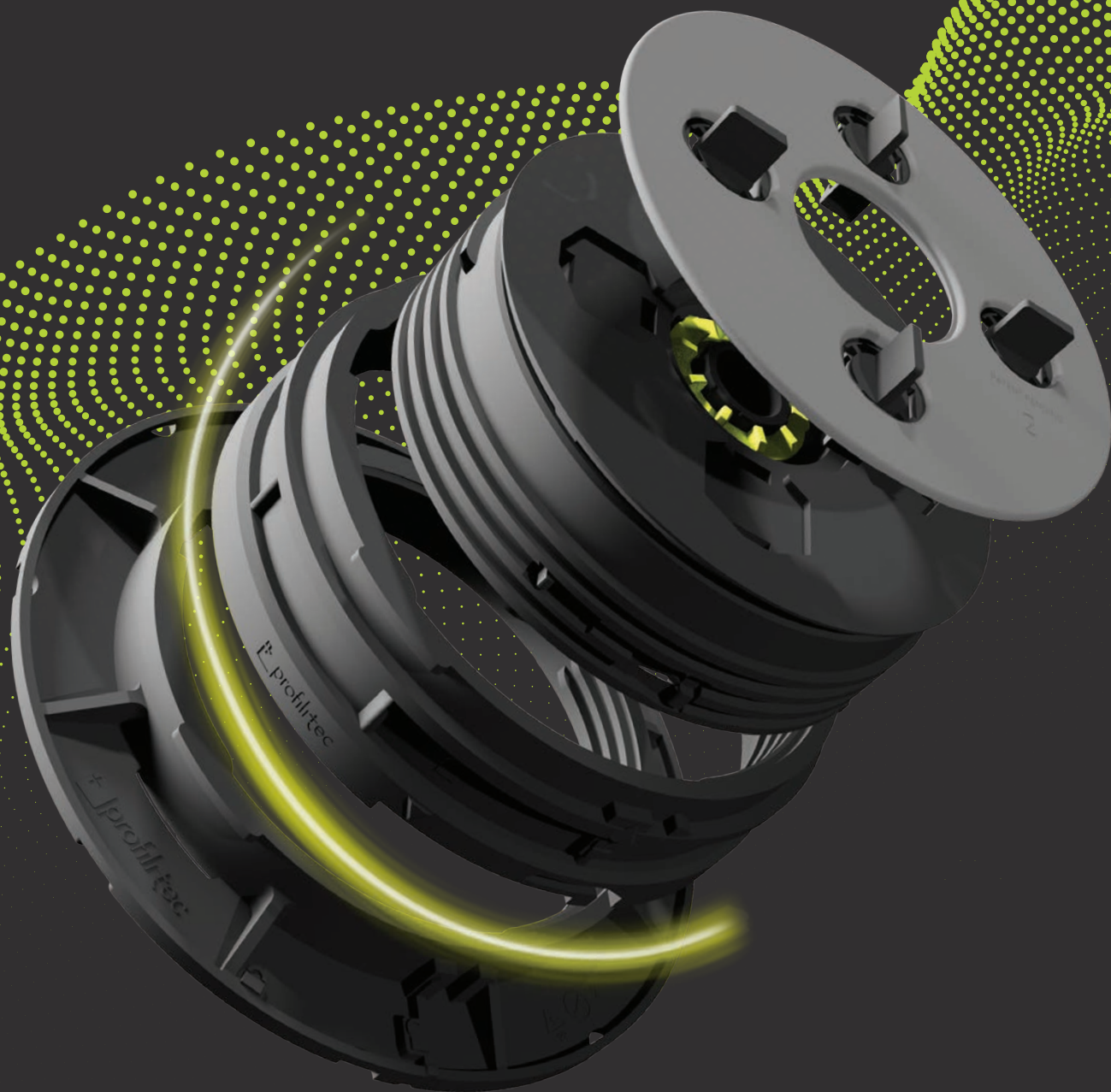
Terraces  
Poolsides  
Roof decks  
Walkways

Gazebo  
Hot tubs  
Gardens  
Bars and restaurants



# SELF-LEVELLING AND FIXED HEAD PEDESTALS

uptec







uptec® 

Uptec pedestals consist of self-leveling and fixed head supports that are adjustable in height. Based on the **3-in-1** concept, uptec includes 3 base items that minimize inventory levels. The uptec system can be assembled to any height and compensate for up to 5% slope of a structure's surface.

uptec®

uptec



**SUPAL**

Low pedestal



**SUPAS**

Standard pedestal

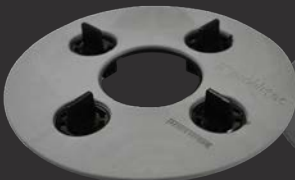


**SUPAR**

Modular ring

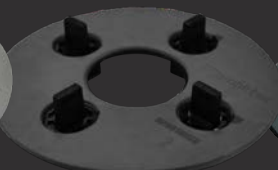
combinable with

**SUPA2**



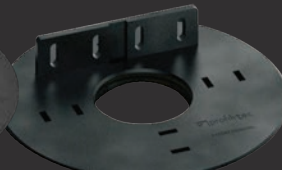
Head with 3/32"  
(2 mm) tabs

**SUPA4**



Head with 3/16"  
(4 mm) tabs

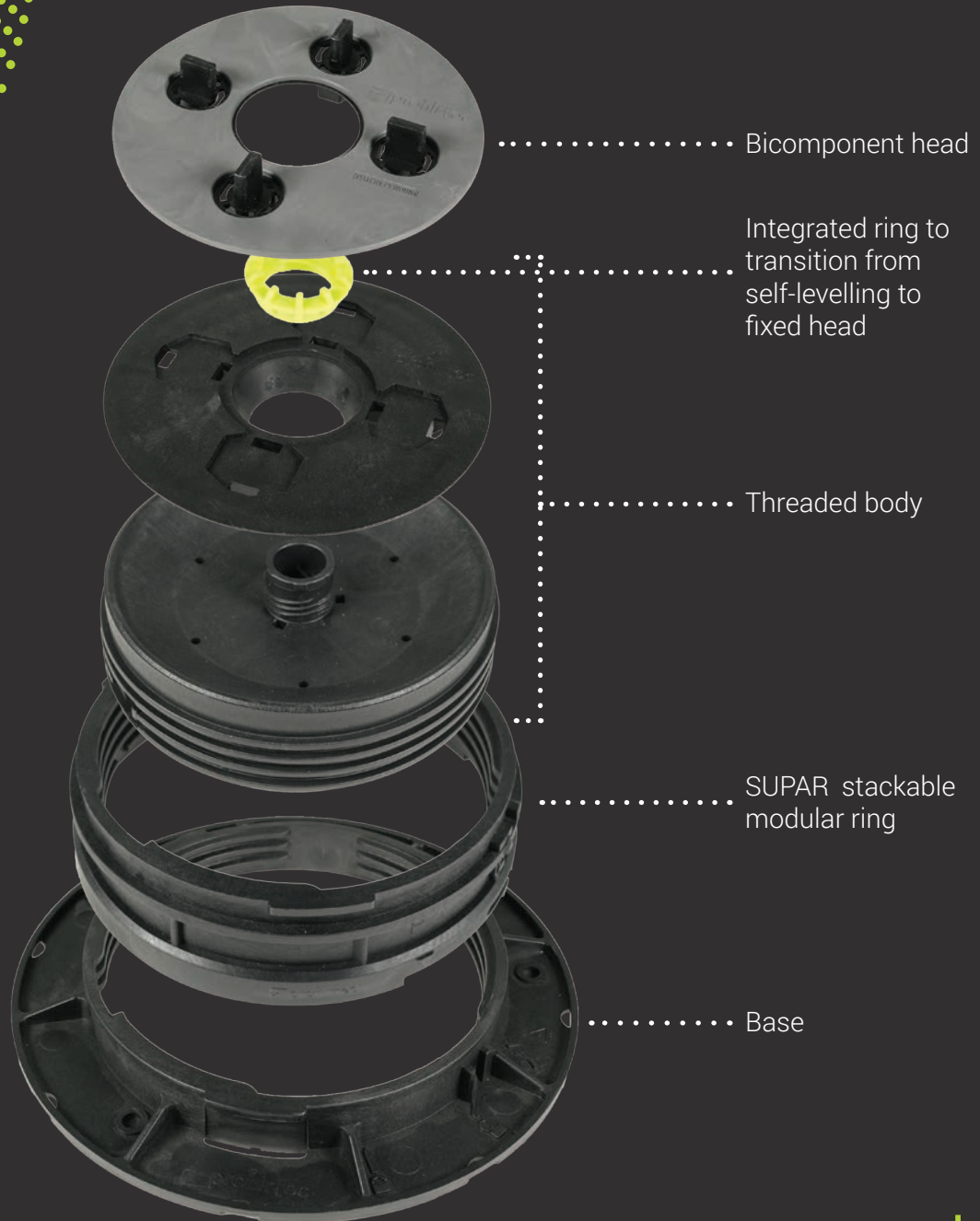
**SUPAW**



Head to be fixed on  
wooden joists



# COMPOSITION



# HEIGHT PROGRESSION

The combination of the three base elements along with the special self-levelling or fixed head, enables uptec to reach any height regardless of the sloped surface (5%), providing exceptional versatility.

uptec



Stackable modular rings designed to meet **any installation height** (from 2 1/4" - 58 mm).



uptec

**1 SUPAR**  
+ 1 3/16"  
(+ 30 mm)

uptec®

# SELF-LEVELLING AND FIXED HEAD

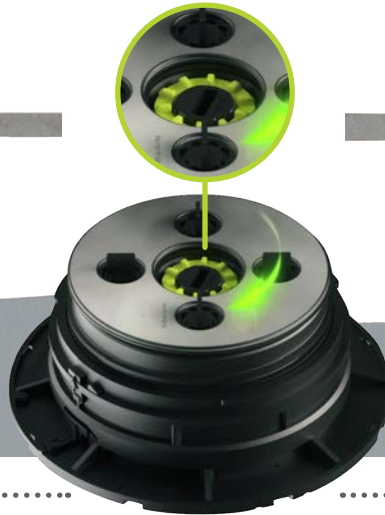
The uptec system incorporates an innovative solution that allows a quick and accurate transition from a self-levelling to a fixed head position with a simple turn of the integrated center ring.

uptec

## SELF-LEVELLING



5% SLOPE

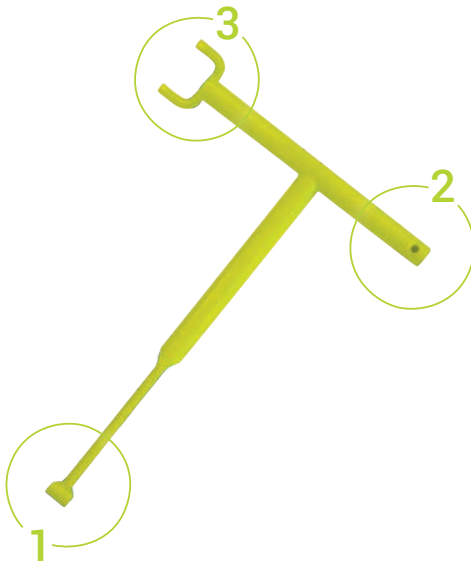


## FIXED



0% SLOPE

## SUPAK MULTIFUNCTION KEY



1 Height adjustment



2 Tab removal

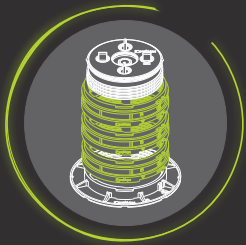


3 Self-levelling to fixed head



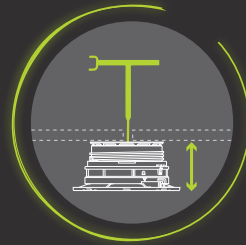


# FEATURES AND FUNCTIONS



## Modularity

Add SUPAR ring to increase the height of the pedestal



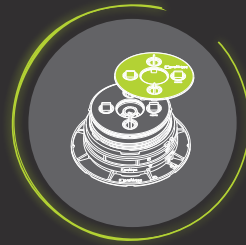
## Adjustable height

Height adjustment is achieved on the surface of the pedestal using the SUPAK key even when all tiles are installed



## Self-levelling and fixed head

Simple integrated mechanism to transition from self-levelling to fixed head



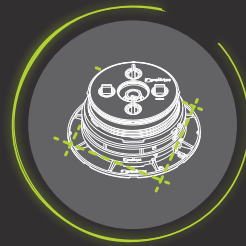
## Interchangeable heads

Interchangeable heads for standard, wood or aluminum joist installations



## Anti-slip and anti-noise

Heads are equipped with anti-slip and anti-noise rubber to reduce impact sound



## Pre-cut base

Markings on the base allow corner and perimeter placement



## Low environmental impact

Made completely from recycled and recyclable material



## Load resistance

Resistance to loads up to 3086 lb (1400 kg)



Uptec ground is a support system allowing the installation of raised floors that have minimal height for outdoor use. Two adjustable supports ranging in height from 3/8" (10 mm) to 9/16" (15 mm), SUPT (3/32" - 2 mm joint) or SUPT4 (3/16" - 4 mm joint). Height can be increased by 3/16" (5 mm) using the SUPB stackable accessory (up to a maximum of 3 units).

The system is manually adjustable and does not require the use of an adjustment key.

uptec ground



## SUPT/ SUPT4

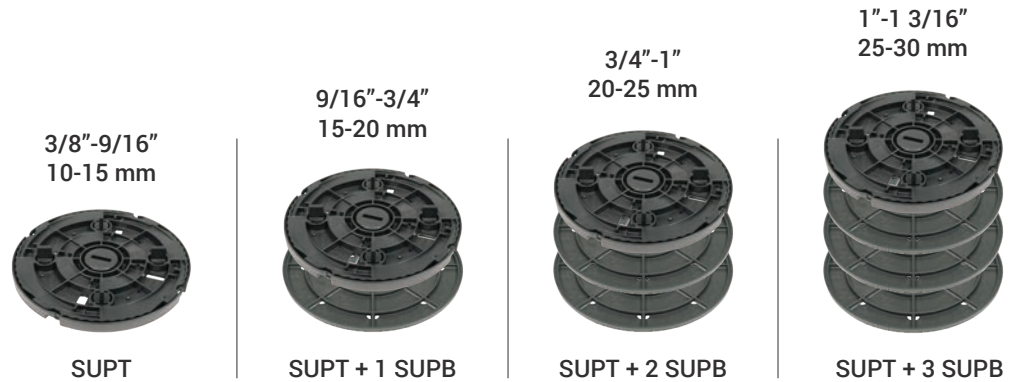
Adjustable pedestal  
from 3/8" to 9/16"  
(from 10 mm to 15 mm)



## SUPB

Extension + 3/16" (+5 mm)

# HEIGHT PROGRESSION



# FEATURES AND FUNCTIONS



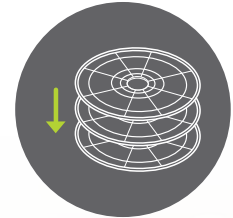
Height can be adjusted by 1/32" (0.5 mm) increments



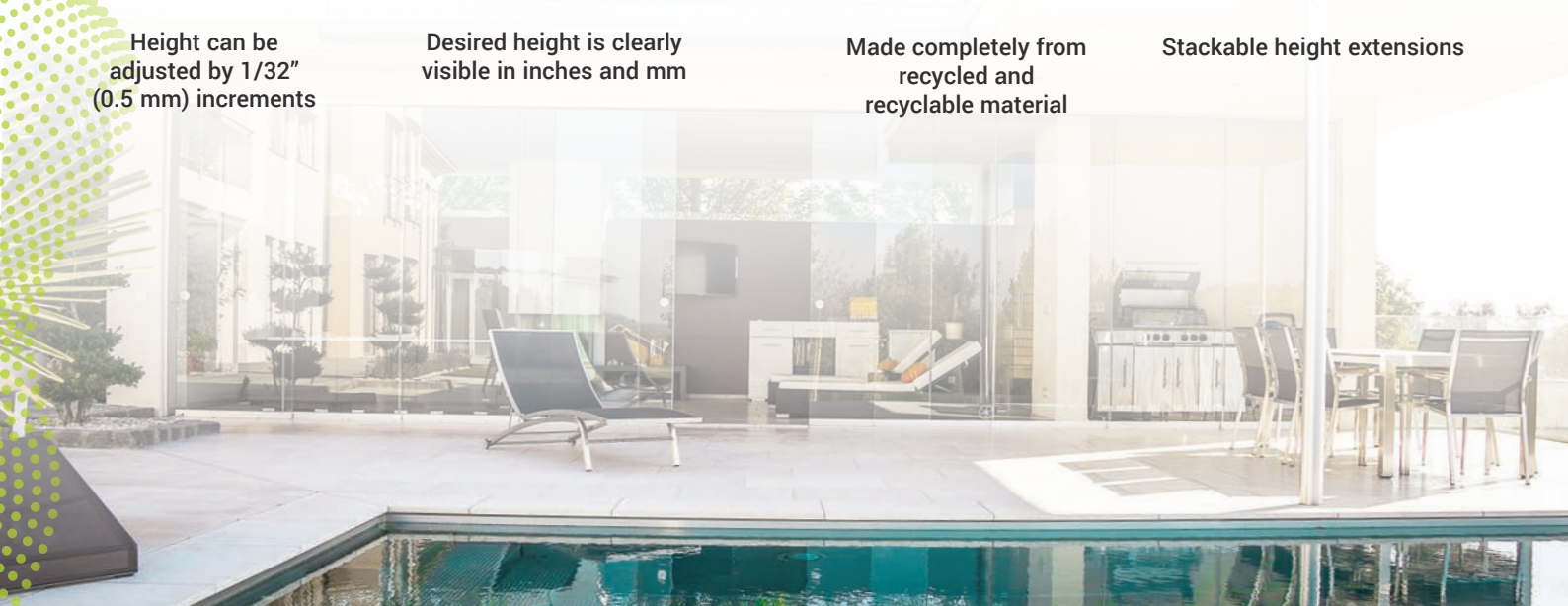
Desired height is clearly visible in inches and mm



Made completely from recycled and recyclable material



Stackable height extensions



# THE MODULARITY OF UPTEC

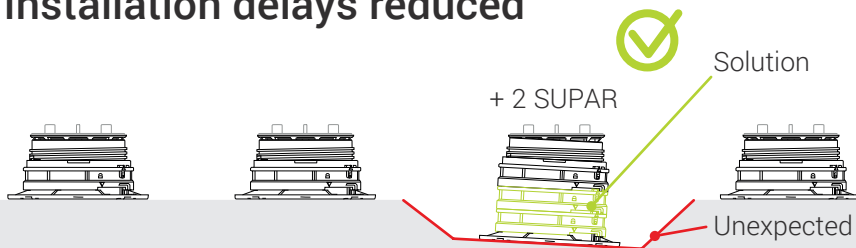
## ADVANTAGES AT THE CONSTRUCTION SITE



### Minimized returns

Any leftover items are easily used in future installations.

### Installation delays reduced



Challenges due to unexpected ground configurations can be quickly resolved eliminating lost time and productivity. Back-and-forth between construction site and warehouse are avoided in case of unexpected complications.





# ADVANTAGES IN THE WAREHOUSE



## Optimized stock management

Minimal number of SKUs:

- Extremely simplified management of the entire supply chain.
- Minimized returns from the construction site.

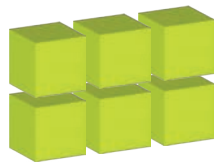
**Profilitec**



**Other solutions**



## Minimum inventory volume and value



**Profilitec**



**Other solutions**

# PRODUCT ENGINEERING

Profilltec applies state of the art engineering calculation methods to ensure the highest quality and performance standards.

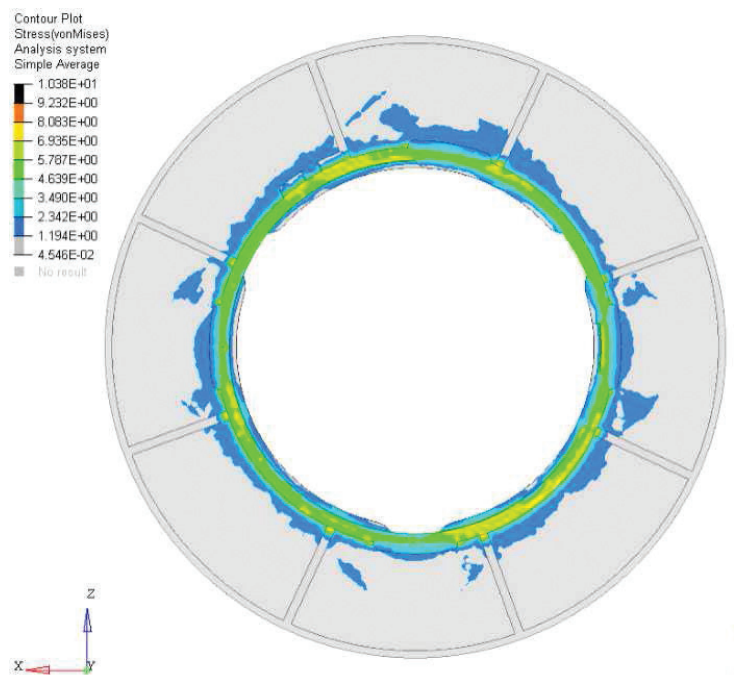
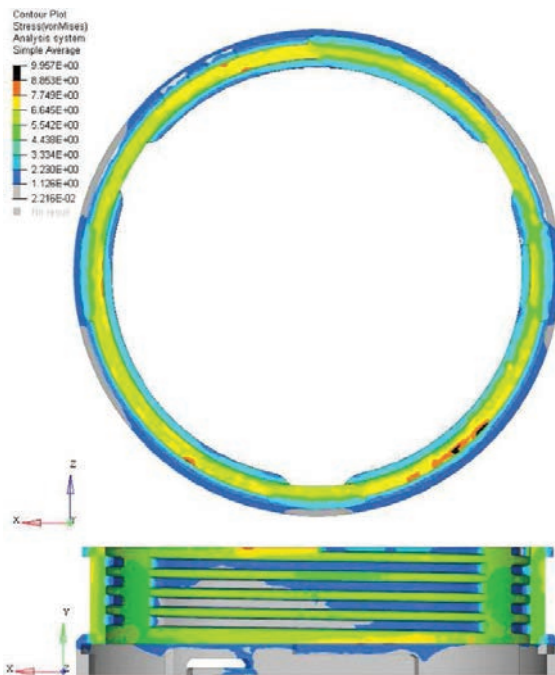
FEM (Finite Element Method) is a numerical technique that is used in load bearing analysis to evaluate the behavior of a product or structure under stress.

Applying the expected loads, the FEM calculates the stresses, deformations, and structural reaction. The results obtained provide an assessment of the stability and thus the safety of the structure, enabling optimization of the design and prevention of possible failure or collapse.

## Load distribution

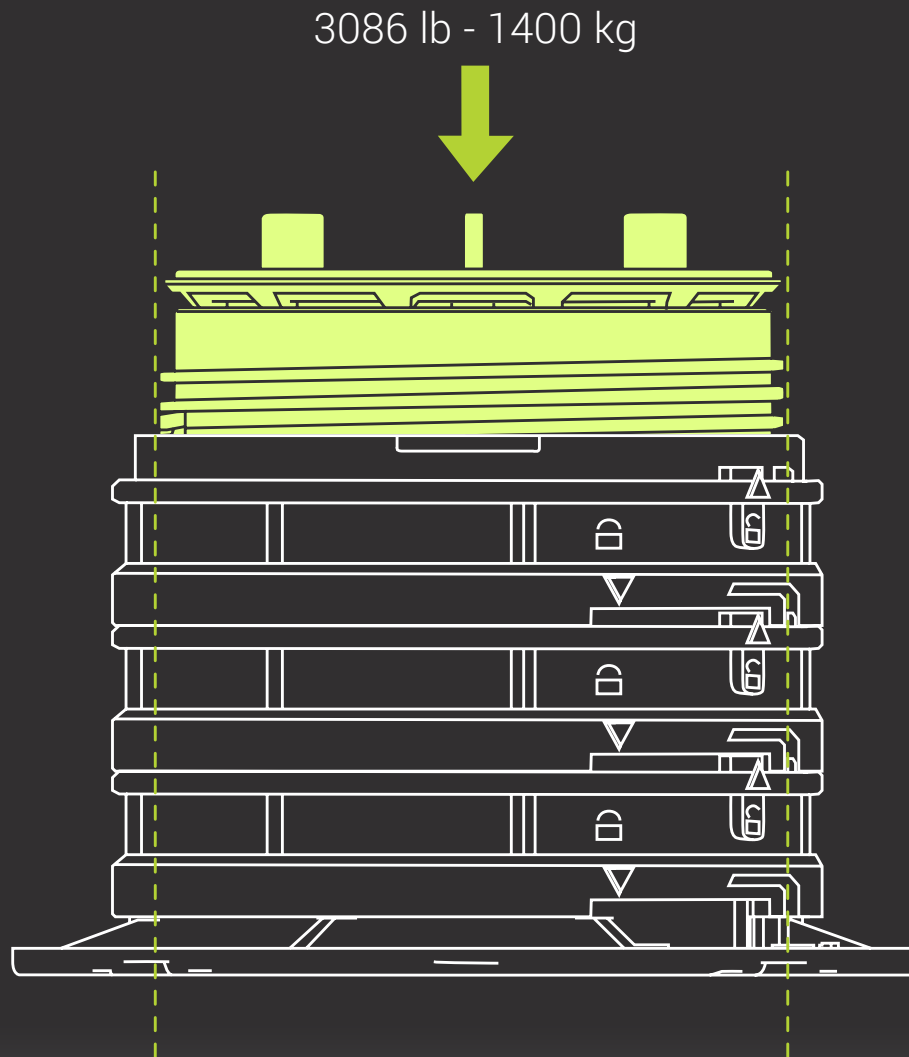


FEM calculation which simulate applied loads to the uptec head reveals that load stress on the threaded body develops vertically throughout the support. This **stress** is **concentrated within the circumference of the threaded body** and is not distributed to the base, which means that because of the larger diameter, uptec has ideal load distribution assuring **high weight resistance**.



# RECORD-BREAKING STRENGTH, STABILITY AND SAFETY

Uptec has exceptional load resistance of 3086 lb - 1400 kg, moreover the large surface head and the diameter of the threaded body offers greater stability to the tile when placed and a perfect load distribution. These features guarantee outstanding safety and stability performance.



# ACCESSORIES

## SUPACLPB

Clip for perimeter - Base  
to hold 3/4" (2 cm) tiles



## SUPACLPT

Clip for perimeter - Head  
to hold 3/4" (2 cm) tiles



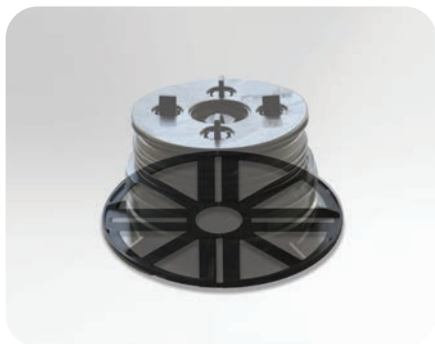
## SUPACLPP

Perimeter tile spacer  
to hold tiles



## SUPL2 - SUPL3

Leveling disk  
3/32" (2 mm) and 1/8" (3 mm) and  
slope compensation



## SUPAR120

Modular ring  
of 4-3/4" (120 mm)  
height



## SUPATG

Mat for substrate  
protection



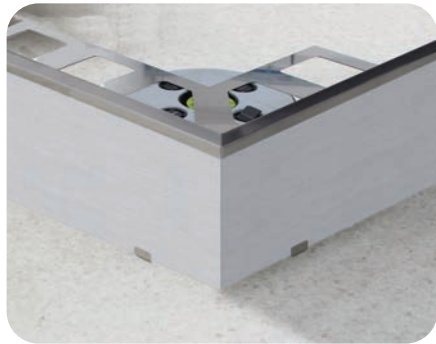


# PERIMETER BORDERS

Profilitec offers a wide range of high-quality border profiles. Raised floors with the uptec system can be vertically finished with a choice of 3 perimeter profiles that fully meet architectural requirements of installation heights, configurations and colors.

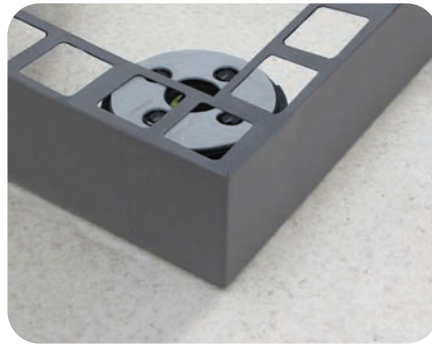
## BSJ

Profile with decorative visible surface of 3/4" (2 cm)



## BSR

Perimeter profile for 3/4" (2 cm) tiles



## BST

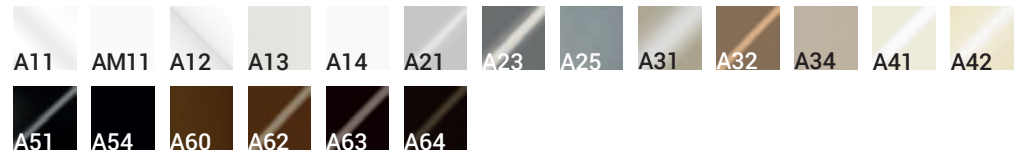
Profile with minimal top-visible edge



### Standard finishes:

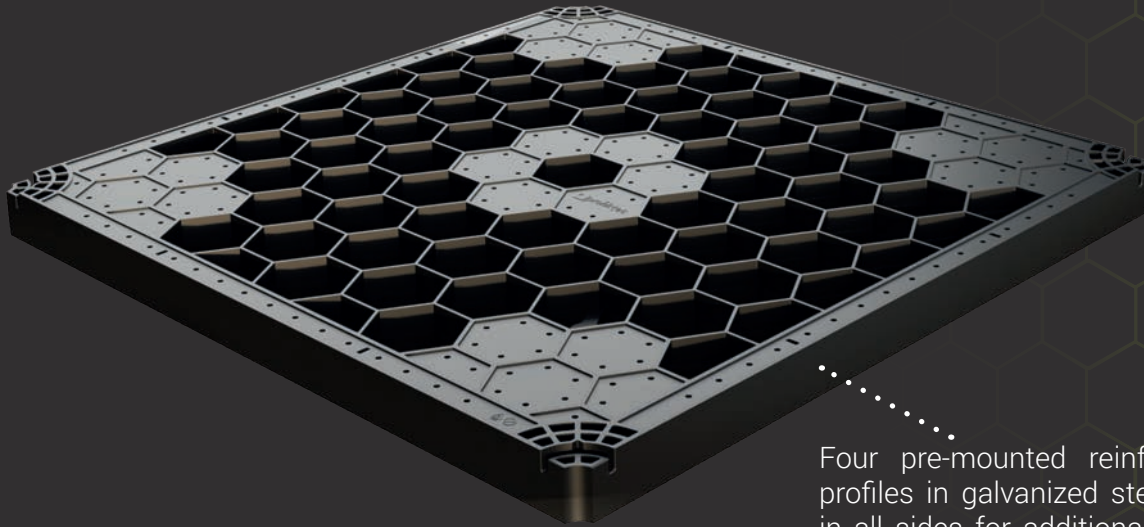


### Finishes on demand:



# SUPATRAY

The innovative Uptec SUPATRAY is meticulously engineered to provide a versatile and durable raised floor solution to protect against injuries in the event of tile breakage. Featuring a honeycomb structure and dimensions of 23-1/2" x 23-1/2" x 1-1/2" - 598 x 598 x 38 mm, it creates a solid substructure for any raised floor project. Manufactured with recycled ABS plastic material, it is designed to withstand the test of time and the most challenging weather conditions, offering exceptional durability and impressive load-bearing resistance.



Four pre-mounted reinforcement profiles in galvanized steel placed in all sides for additional strength and stability.



# FEATURES AND FUNCTIONS



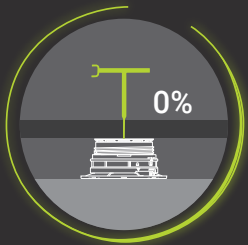
## Ultimate Safety

Unmatched protection against injuries in the event of tile breakage, providing peace of mind.



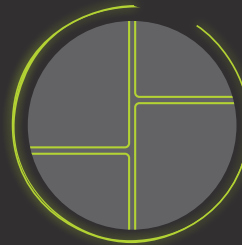
## Effortless Installation

Revolutionizes installation with convenient 23-1/2" x 23-1/2" - 60x60 cm dimensions, drastically reducing time and labor costs.



## Perfection in Precision

Achieves perfectly level flooring surfaces and offers the possibility for pedestal height adjustment using the SUPAK multifunctional key for absolute precision.



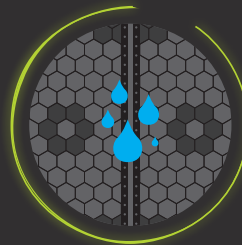
## Limitless Creativity

Unleashes boundless creativity, enabling the creation of multiple installation patterns with various tile sizes.



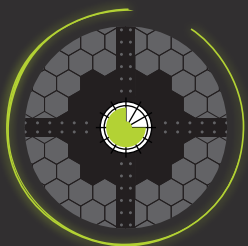
## Tailored Adaptability

Can be easily cut to offer individual customization options for curves, recesses, and small edge sections.



## Efficient Drainage

Guarantees drainage efficiency, ensuring rapid water dispersal through joints and its cavities.



## Stability Standard

SUPATRAY is securely connected together by the SUPATRAYLOCK plastic locking disc, ensuring uniformity and maximum stability.



## Sustainability

SUPATRAY incorporates recycled content and embraces full recyclability, leading the charge towards a greener future.

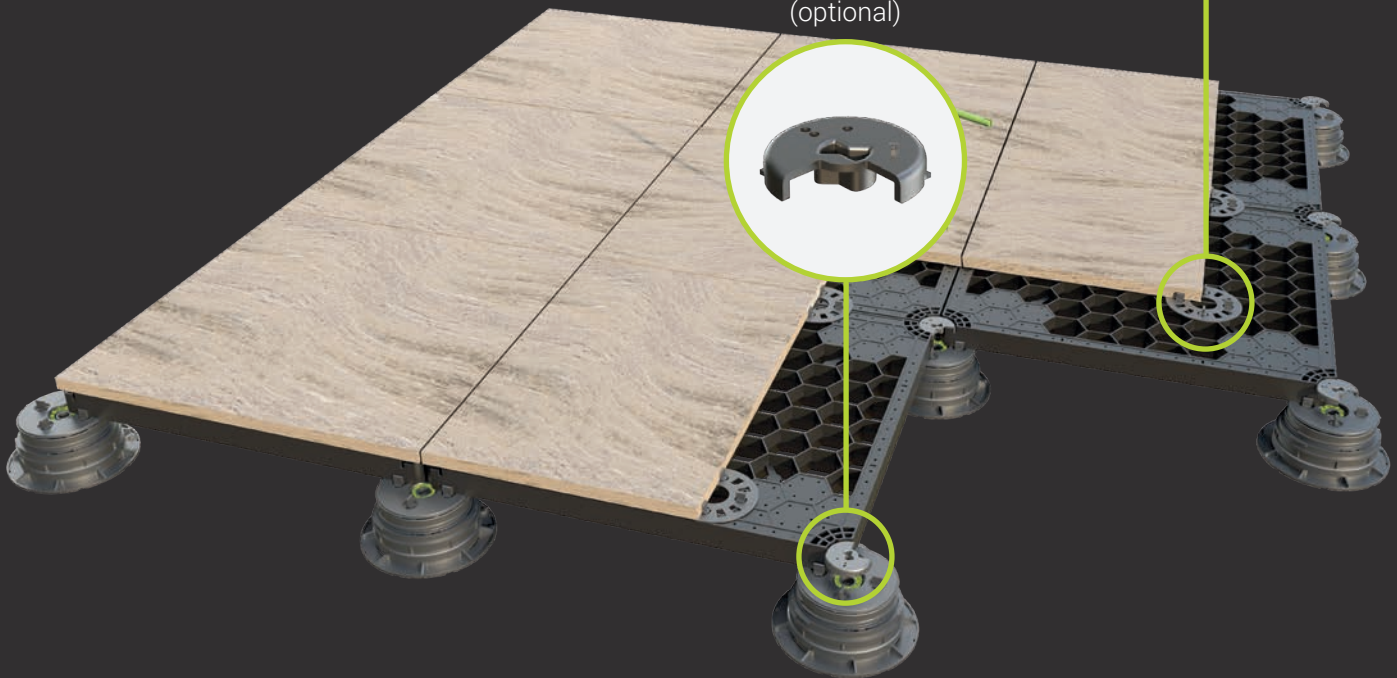
# SUPATRAY ACCESSORIES

Two helpful accessories are available for state-of-the-art installation. SUPATRAYTAB, rubber disc for anti slip and anti noise performance comes in two different tab sizes (joints of  $3/32'' - 2\text{ mm}$  and  $3/16'' - 4\text{ mm}$ ). SUPATRAYLOCK connects four trays for a major stability during installation.

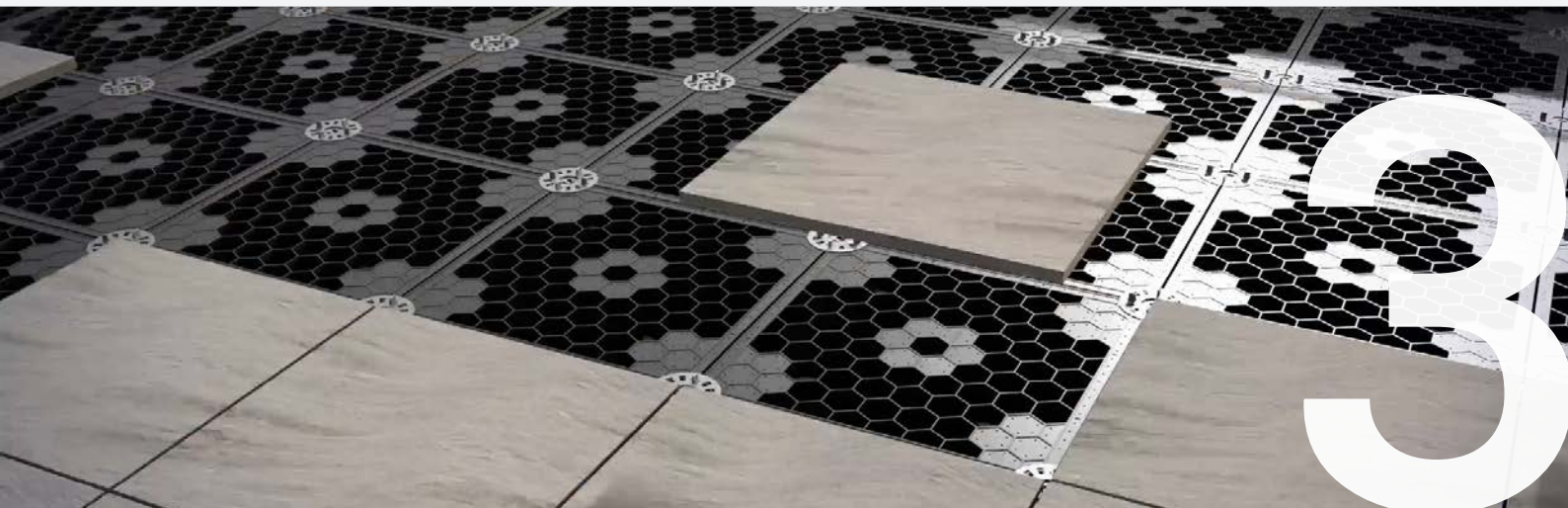
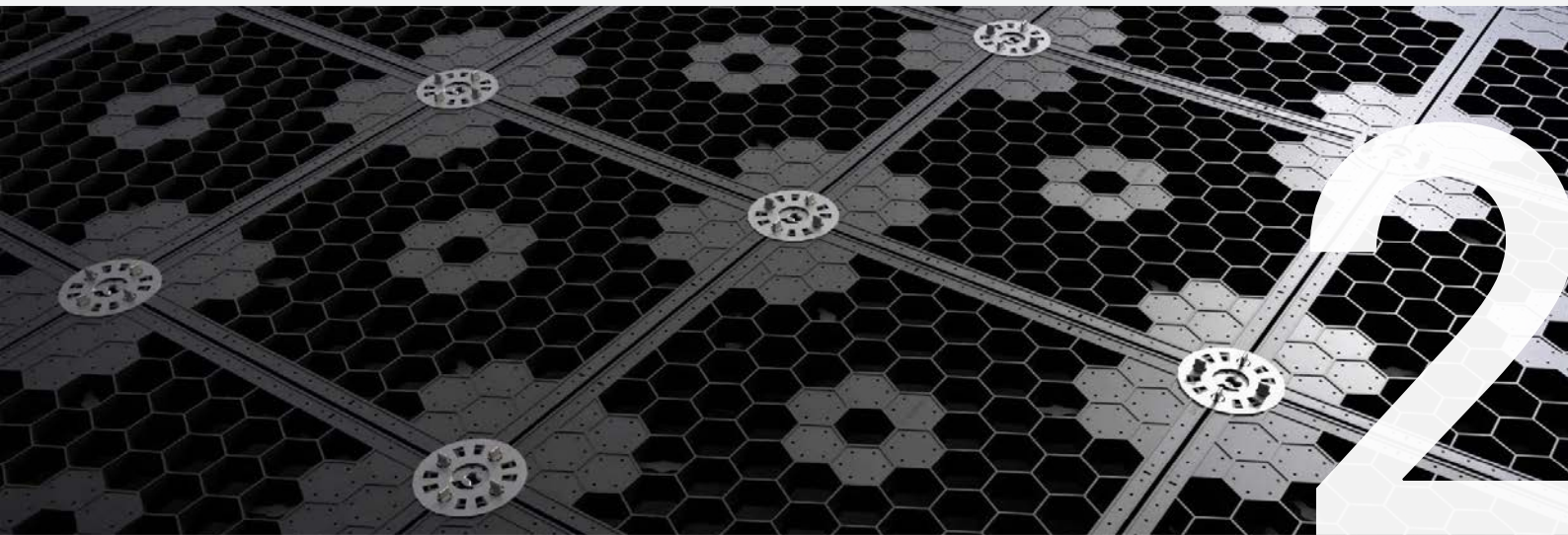
**SUPATRAYTAB**  
for  $3/32'' - 2\text{ mm}$  and  
 $3/16'' - 4\text{ mm}$  joints



**SUPATRAYLOCK**  
Locking Disc  
(optional)









# ANTI WIND UPLIFT SYSTEM

The SUPATRAY anti wind uplift system includes a plastic tray featuring three adhesive tracks (perimeter, center, and auxiliary sections), Profilitec adhesive FIXXTEC and the locking disc SUPALOCK.

The assembly process is straightforward. Starting with bonding the porcelain pavers onto the SUPATRAY using FIXXTEC adhesive applied to the tracks. Next, the pedestals are positioned and leveled prior to placing the assembled SUPATRAY atop them. To ensure a level and secure surface, all four corners of the trays are firmly connected using the SUPALOCK disc, subsequently locked-in by using the SUPAK key.

## FEATURES AND FUNCTIONS



### Invisible

Featuring a hidden lock down system which allows the surface to maintain its original flush aesthetic.



### Removable

The system allows for easy inspection of the underlying surface, facilitating maintenance and replacement of tiles if needed.



### Fast and safe

Assembly is a straightforward process, eliminating the need to kerf the pavers' sides, preserving their integrity and saving precious time during installation.



### Dual function

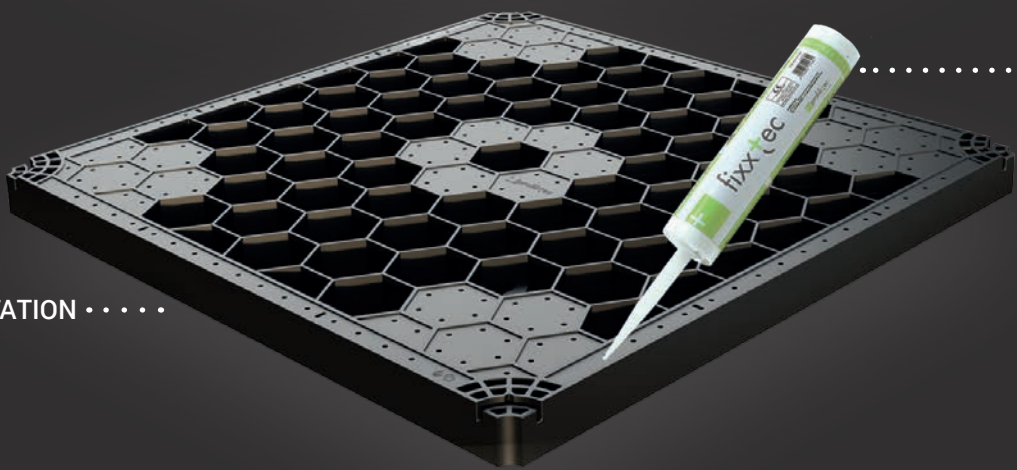
SUPATRAY acts as wind uplift system and guarantees an anti-fragmentation hazard in case of tile breakage.

# COMPOSITION

LOCKING DISC .....



..... TILE



..... ADHESIVE

ANTI FRAGMENTATION .....  
TRAY

UPTEC PEDESTAL .....



# PERFORATED JOIST WITH INTEGRATED RUBBER INSERT

SUPAANG240 is a patented aluminum joist for raised floors that offers freedom and flexibility in the choice of materials, size, and flooring installation pattern.

## Anti-slip and anti-noise rubber

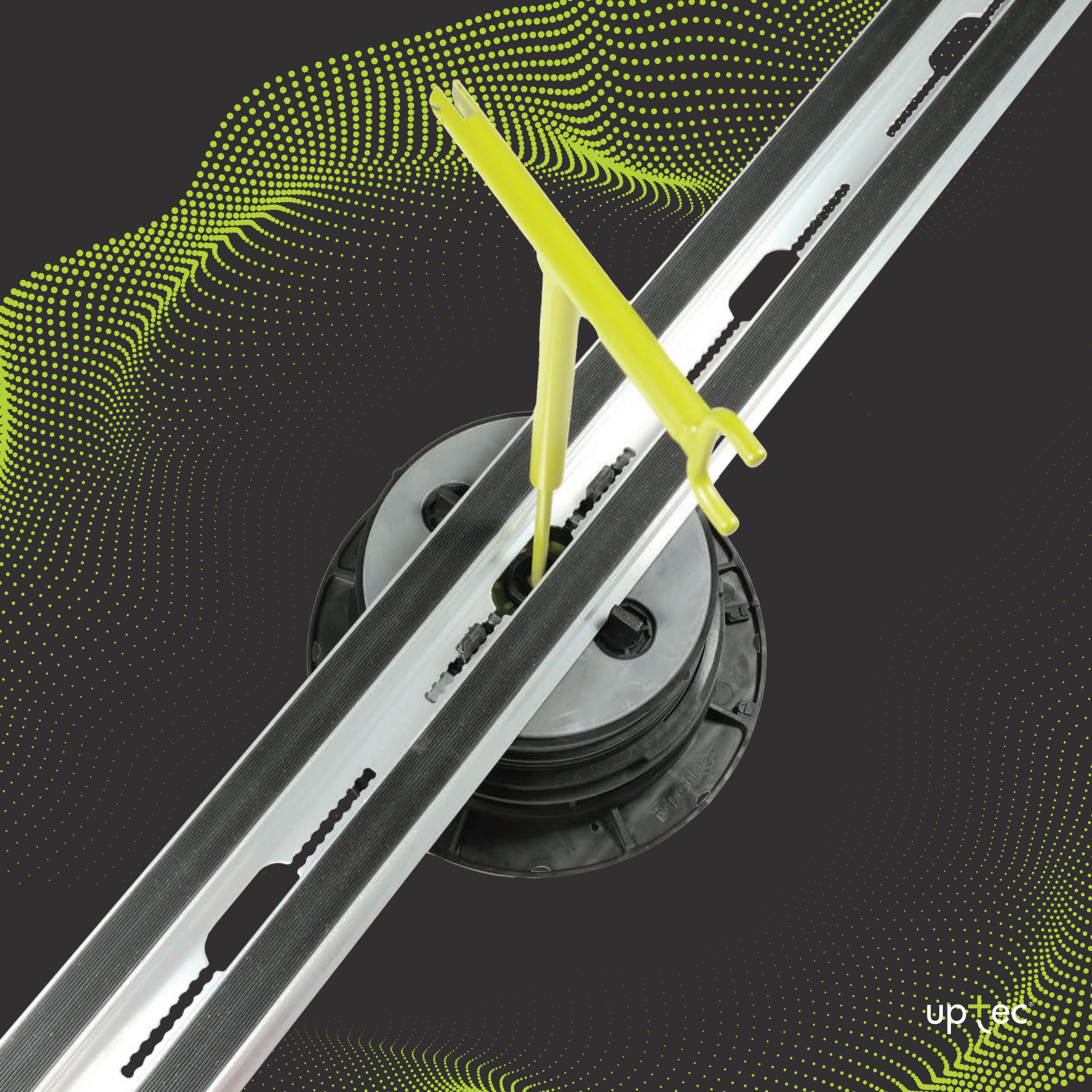
The top portion has two special rails where anti-slip and anti-noise rubber gaskets are inserted. The joist incorporates pre-applied rubber saving installers valuable time and ensuring a quick and easy installation.

## Punched openings

The lower part includes openings that ensure perfect water outflow and allow for height adjustment during and after installation. Additionally, the dented geometry of the openings enables a secure and stable attachment to the head of the pedestal.







up+tec



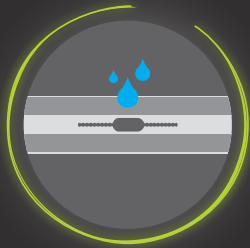
# FEATURES AND FUNCTIONS



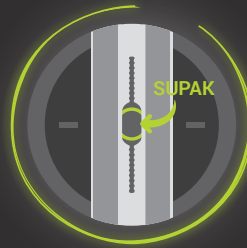
SUPAANG240 provides maximum freedom and flexibility of tile sizes that can be installed, permits a variety of layout options and various covering materials



SUPAANG240 ensures maximum performance for a structurally stable, safe and quick installation



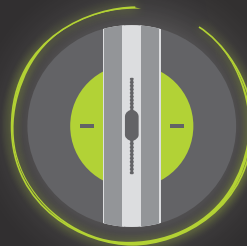
Openings on the base ensure proper water outflow



Openings on the base allow height adjustment with the SUPAK key during and after installation



SUPAANG240 comes with the anti-noise integrated rubber inserts



Openings on the base ensure safe and stable attachment to the pedestal head

# JOIST SYSTEM ACCESSORIES

## SUPDG

Tile spacer  
to be used with SUPAANG240



## SUPCLIPG

Perimeter and central clips  
to be used with decking and in  
combination with SUPAANG240



## SUPAJG

Joist junction



## SUPACLPPT

Perimeter tile spacer  
to hold tiles



# up+tec<sup>®</sup>

## CALCULATOR

[www.profilitec.com/uptec-configurator](http://www.profilitec.com/uptec-configurator)

**Uptec pedestal calculator is an online program to create your own raised floor and calculate the number of supports required for your project.**

Design your surface area or upload an architectural drawing, choose from an extensive list of tile sizes, select the joint width, and set the desired overall height of the assembly.

The Uptec pedestal calculator automatically determines which and how many supports and accessories are required for the project.

It is an easy and intuitive tool that offers a wide range of functions to simplify your work.

It also provides additional information such as calculation of tiles to be used and lb (kg) of CO<sub>2</sub> saved per ft (m<sup>2</sup>) of floor area.



## EPD Certification

Uptec is EPD certified. In building assessments, building products are evaluated through environmental product declarations (EPDs) conducted in accordance with ISO 14025 and EN 15804:2012+A2:2019.

The analysis evaluates the life cycle of the Uptec system and measures it in terms of carbon footprint with independent third-party verification of the statement and data, according to ISO 14025:2006. A series of case studies have shown that Uptec has an improvement of more than 70 percent in terms of carbon footprint over traditional methods of exterior floor assembly, such as glued tiles on a lightweight screed.



Discover more



**EPD**  
CERTIFICATION



# SYSTEM COMPONENTS AND ACCESSORIES

Code	Product description	Pieces for packaging
SUPAL	Low pedestal	24
SUPAS	Standard pedestal	24
SUPAR	Modular ring of 1 3/16" (30 mm)	24
SUPAR120	Modular ring of 4 3/4" (120 mm)	24
SUPT	Reduced height pedestal with 3/32" (2 mm) tabs	50
SUPT4	Reduced height pedestal with 3/16" (4 mm) tabs	50
SUPB	Extension for SUPT/SUPT4 pedestals	50



SUPAL



SUPAS



SUPAR



SUPAR120



SUPT - SUPT4



SUPB

Code	Product description	Pieces for packaging
SUPA2	Head with 3/32" (2 mm) tabs	240
SUPA4	Head with 3/16" (4 mm) tabs	240
SUPAW	Head to be fixed on wooden joists	240



SUPA2



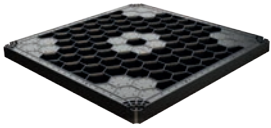
SUPA4



SUPAW

Code	Product description	Pieces for packaging
SUPATRAY	Anti-fragmentation tray	56

Code	Product description	Pieces for packaging
SUPATRAYLOCK	Locking disc for SUPATRAY	240
SUPALOCK	Aluminum locking disc for SUPATRAY	240
SUPATRAYTAB2	Spacer 3/32" - 2 mm for SUPATRAY	240
SUPATRAYTAB4	Spacer 3/16" - 4 mm for SUPATRAY	240



SUPATRAY



SUPATRAYLOCK

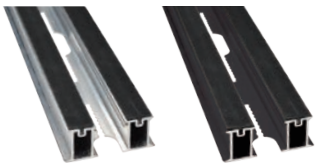


SUPATRAYTAB2



SUPATRAYTAB4

Code	Product description	Pieces for packaging
SUPAANG240	Aluminum joist for SUPA4	10
SUPAANGB240	Black aluminum joist for SUPA4	10
SUPDG2	Tile spacer 3/32" - 2 mm	500
SUPDG	Tile spacer 3/16" - 4 mm	500
SUPCLIPG	Perimeter and central clips (Deck)	50
SUPAJGSET20	Joint for joist	20
SUPACLPPT	Perimeter clip to hold tiles	5



SUPAANG240 - SUPAANGB240



SUPDG2 - SUPDG



SUPCLIPG



SUPAJG



SUPACLPPT

Code	Product description	Pieces for packaging
BSJ	Perimeter profile	10
BSR	Perimeter profile	5/10
BST20	Perimeter profile	5
SUPL2	3/32" (2 mm) leveling disk	600
SUPL3	1/8" (3 mm) leveling disk	500
SUPATG	Mat to protect the substrate	24
SUPACLPBSET5	Perimeter clip - Base	5
SUPACLPTSET5	Perimeter clip - Head	5
SUPACLPPSET5	Perimeter clip	5
SUPAK	Multifunction key	1



BSJ



BSR



BST



SUPAK



SUPL2 - SUPL3



SUPATG



SUPACLPB

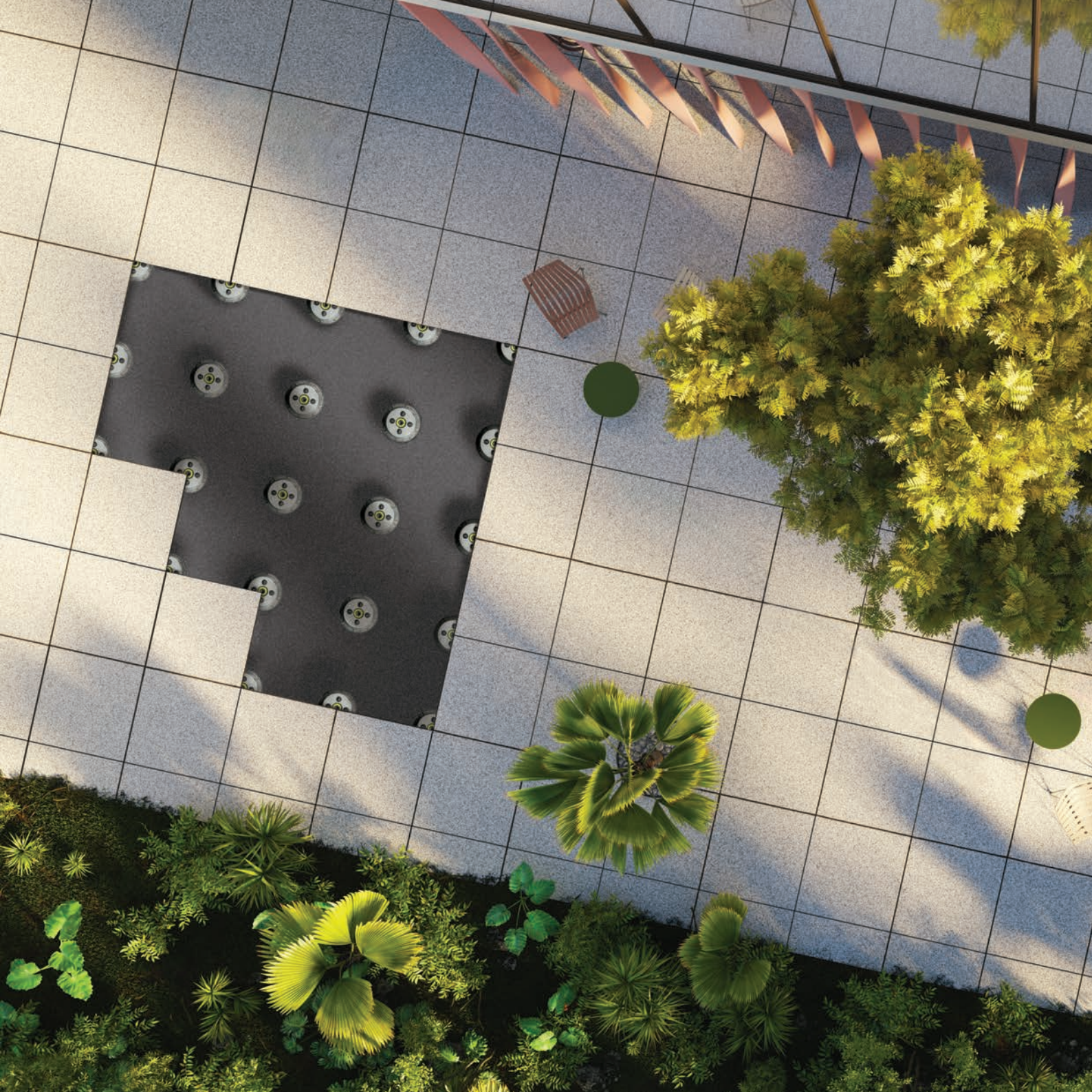


SUPACLPT



SUPACLPP







up+tec®





[www.profilitec.com](http://www.profilitec.com)



**Profilitec S.p.A.**

Via Scotte, 3  
36033 Isola Vicentina  
(Vicenza) Italy



[profilitec@profilitec.com](mailto:profilitec@profilitec.com)



+39 0444 268311

**Profilitec Corp.**

472 Meeting Street  
Suite C - #301  
Charleston, SC 29403, USA

[customerservice@profilitec.com](mailto:customerservice@profilitec.com)

+1 855 290 9591

**Profilitec Ibérica S.L.**

Camí de Betxí, 2  
12540 Castellón  
Vila-Real, España

[iberica@profilitec.com](mailto:iberica@profilitec.com)

+34 964 18 29 84

BOOKUPT/US



Rev. 06/24